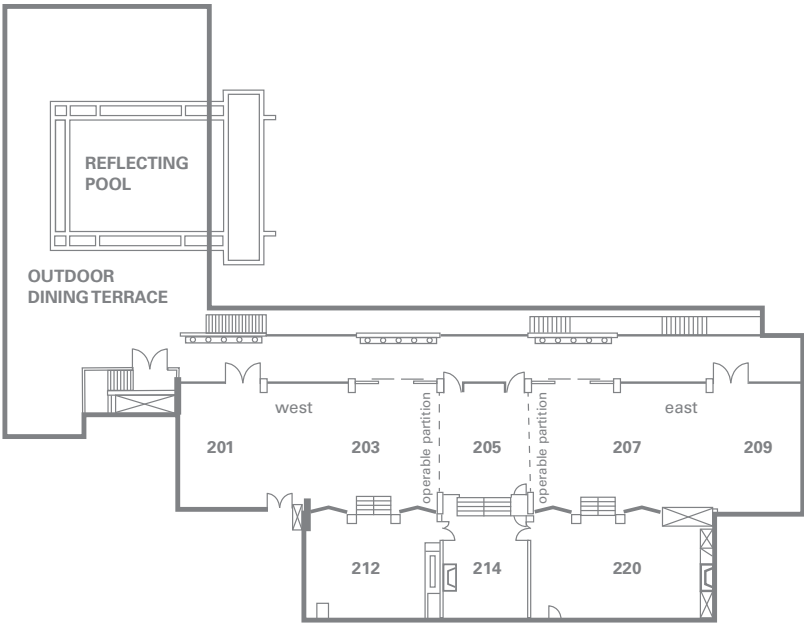
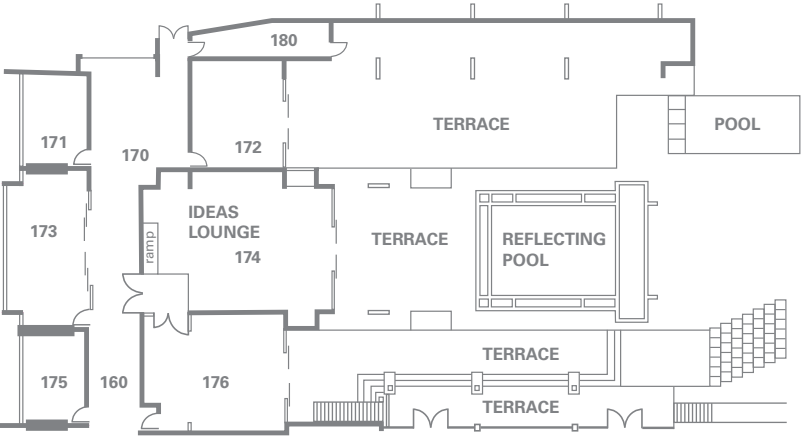


# our spaces

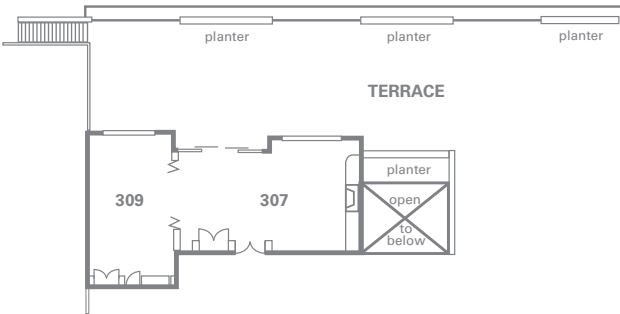
**SAGE MAIN LEVEL  
& RESTAURANT**



**SAGE LOWER LEVEL  
& GARDEN**



**SAGE UPPER LEVEL**





# room capacities

Room	Banquet 60"	Reception Capacity	Theatre Style	Classroom	U-Shape	Boardroom	1/2 day Rate	Full Day Rate	Min. Wknd Spend
<b>SAGE MAIN LEVEL &amp; RESTAURANT</b>									
Sage Entire Restaurant	250	250	250	250	150	150	\$1,700	\$2,800	\$12,000
Sage East	120	125	120	80	60	70	\$1,200	\$1,900	\$8,000
Sage West	125	125	120	80	60	70	\$1,400	\$2,000	\$8,000
Main Patio	80	80	N/A	N/A	N/A	N/A	\$500	\$700	\$8,000
<b>SAGE LOWER LEVEL &amp; GARDEN</b>									
Room 172	24	15	24	18	16	18	\$600	\$800	\$1,000
Room 173	18	24	24	12	20	24	\$400	\$600	\$1,000
Ideas Lounge 174	56	70	50	36	24	30	\$750	\$1,200	\$5,000
VIP Room 176	32	24	32	16	20	24	\$500	\$700	\$1,000
Lower Patio	80	80	N/A	N/A	N/A	N/A	\$450	\$650	N/A
<b>SAGE UPPER LEVEL</b>									
Seminar Room	48	55	55	24	24	30	\$600	\$900	\$2,500

Half day = 4 hour maximum // Full day = 8 hour maximum





# audio-visual equipment rentals



**EQUIPMENT LIST**

<b>Projector</b>	<b>Flip chart</b>
<b>Laptop</b>	<b>Easel</b>
<b>Microphones</b>	<b>AV Cart</b>
<b>Screen</b>	<b>Photocopies</b>
<b>Lectern + microphone</b>	

Additional equipment is available upon request.  
Please contact your event planner for more details.

Some rooms include a complimentary built-in PA system. We offer VGA and HDMI connections with all projectors. Please check with your event planner to make sure the connection is compatible with your computer. We also provide free wireless internet service.

Dedicated technical support is available through UBC (\$55 / hour, minimum 4 hours).

